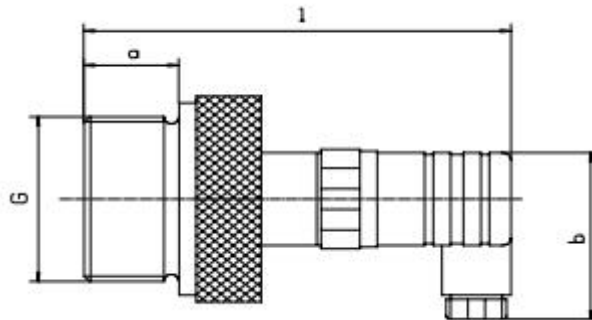


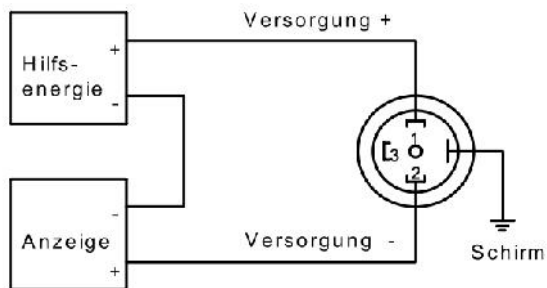
Bauformen und Abmessungen

Membran innenliegend

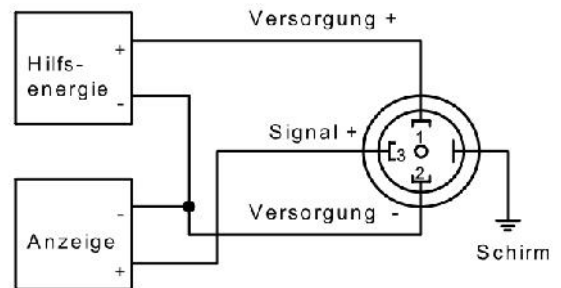


Elektrischer Anschluss

Zweileiterschaltung
4...20 mA



Dreileiterschaltung
0...20 mA
0...5/10 V



Maße in mm					
Typ	a	b		l	G
SD-50	22	48		102	G1 1/2 "
SD-52	22	48		102	G1 1/2 "